

Directions for applying ERGELIT tapes

Equipment and materials:

- 1 bucket of water
- 1 container for topping up bucket
- 1 pair of rubber gloves
- ERGELIT tape 03

Preparation:

The section of pipe to be wrapped must be accessible all round. Have enough ERGELIT tapes to hand for the job and place the bucket of water close to the pipe that is to be treated. The pipe should be about 20 cm clear of the ground, or at least have enough clearance for the diameter of the roll of ERGELIT tape. No further preparation is required.

Method of application:

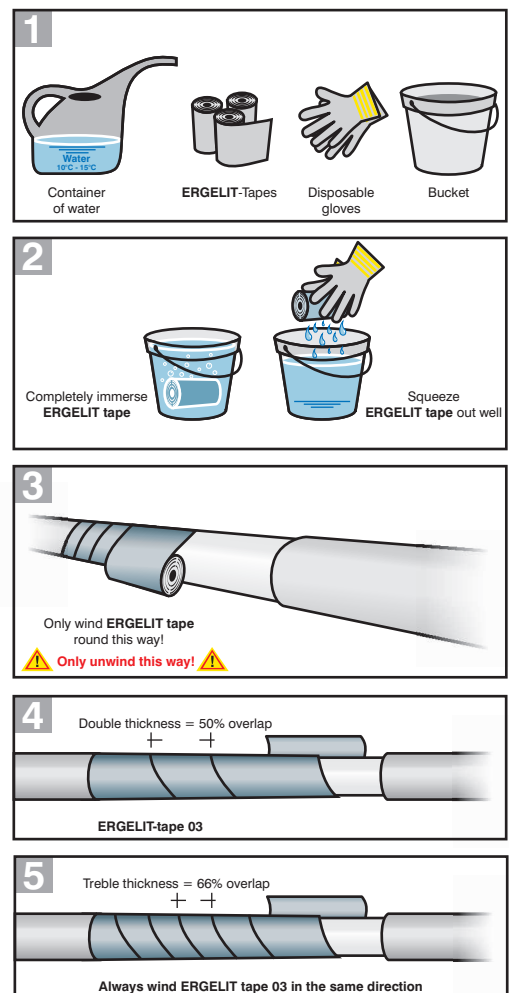
ERGELIT tapes are workable between -15° and $+50^{\circ}\text{C}$. To soften the tape, simply immerse it in cold water ($10\text{-}15^{\circ}\text{C}$) until no more bubbles appear. This process lasts between 30 seconds and 3 minutes, depending on the thickness or length of the ERGELIT tape.

Do not keep the ERGELIT tape longer than 5 minutes in the water. If the ERGELIT tape is obviously wound too tightly, loosen it up before soaking it, so that the water can penetrate the whole tape. After soaking, allow surplus water to drain off, then squeeze and knead the tape.

In the case of smaller tapes, this can be done with both hands. For larger rolls, this kneading is done directly against the pipe itself. This procedure makes the ERGELIT tape pliable, so that it can immediately be wrapped round the pipe.

ERGELIT-Tape 03

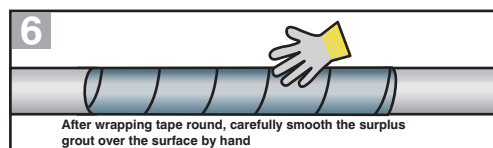
Where pipes are laid in trenches in the normal way, one begins where the factory-made fibro-cement casing stops. Always wrap in the same direction, building up 2 or 3 layers, i.e. overlapping by half or two-thirds of the width of the tape. Overlapping by half a tape's width gives a final thickness of about 6 mm. Overlapping by two-thirds gives a final thickness of about 9 mm.





Method of application:

While unrolling the tape around the pipe, the roll of tape must remain facing inwards towards the pipe. In this way the tape remains taut and can be unrolled more evenly. It also means that the curved end of the tape will fit more snugly against the curve of the pipe. Excess mortar can easily be smoothed over the tape edges and butt-joints by hand. In an ambient temperature of 20°C, the trench can be filled in again after about 1 hour.



Time requirement:

For small pipes, e.g. DN200, one operator can tape a welded joint in about 4 minutes. For larger pipes, e.g. DN800, 2 operators require double that time.

Special situations:

Where the trench has to be filled in in less than 1 hour, or where the area being repaired with ERGELIT tape has to be load-bearing in less than 1 hour, it is possible to shorten setting time by about 20 mins. To achieve this, the freshly wrapped area is heated to 60-70°C, using an open flame, as if applying a shrink sleeve. Where the ERGELIT tape is being applied during underground trenchless pipe-driving, it is recommended to butter the surface, the butt-joints and the connection to the factory-produced fibro-cement sheathing with ERGELIT-10S special. This gives a hard surface and a smooth and seamless structural coating. ERGELIT-10S special can be rubbed as dry grout on to the wet surface of the ERGELIT tape. If necessary, wet the surface again.

Precautions:

The usual precautions must be taken when handling cement-based materials. Incorrect handling is likely to lead to caustic attack by the cement in the grout. Where the skin is in repeated and lengthy contact with the grout, this can lead to loss of the skin's natural oils, and hence to skin irritation

Engineering products and processes for the construction and renovation of drains, sewers, pipes, tanks, roads, industrial floors & anchors

